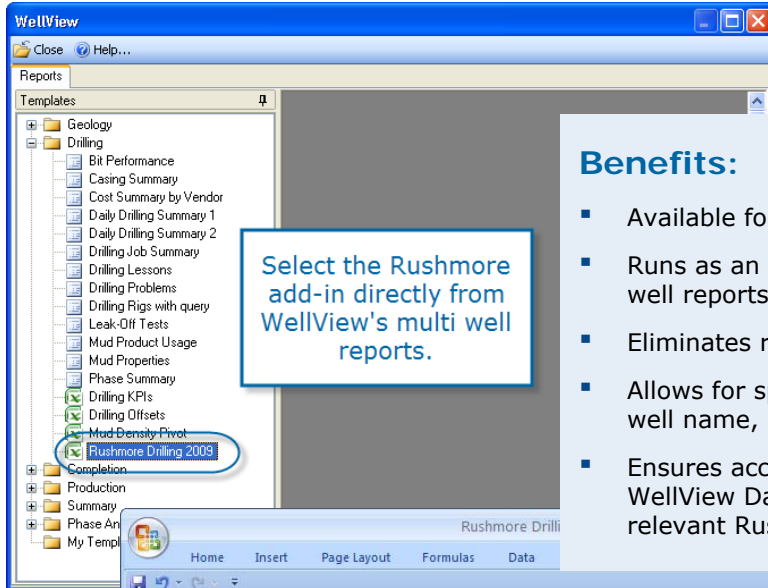


Peloton WellView® and Rushmore Review

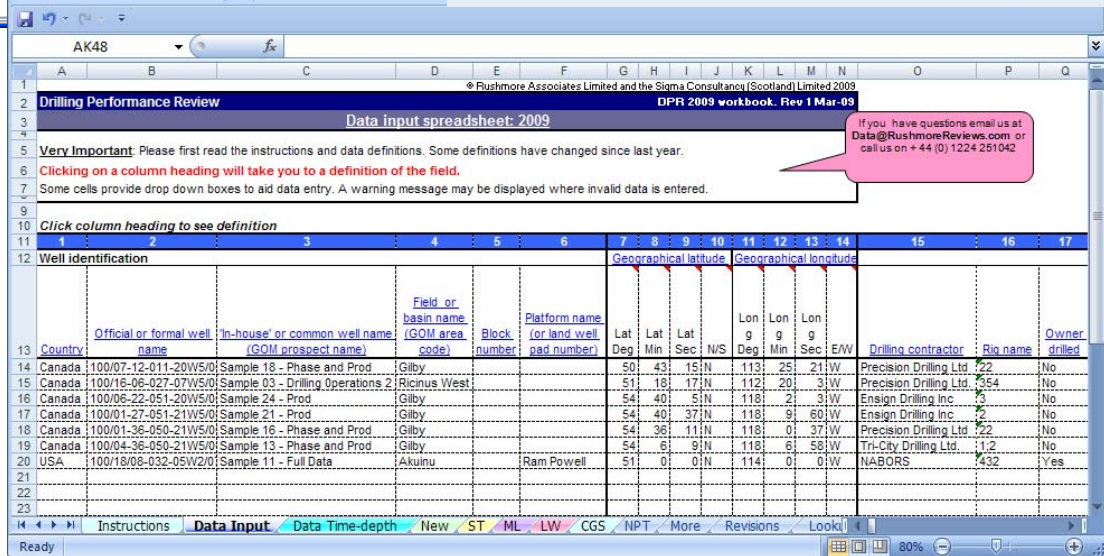
Peloton's WellView allows users to record well related data during all aspects of the well life cycle—from planning, drilling, and completion; to testing, production, and workover; and finally to abandonment. Interactive reports and schematics provide a historical record of activities, while analysis tools allow users to enhance future performance.

Rushmore clients can import and export data to and from the MasterView data model.



Benefits:

- Available for Rushmore Drilling and Completions.
- Runs as an Excel add-in from WellView's multi well reports.
- Eliminates redundant data entry.
- Allows for specific corporate mappings (such as well name, owner drilled, current well status).
- Ensures accuracy and completeness with the WellView Data Auditor and background colors for relevant Rushmore data.



The Rushmore Performance Review add-in allows users to enter related data into WellView as part of their normal daily reporting duties. At the end of the relevant phase, Rushmore data is automatically exported from WellView to the Rushmore Review reporting format. This process minimizes the engineering effort required to complete the data before submitting to Rushmore Associates.

For more information, contact Peloton.