



Background

IDS was founded in 1996 to provide reporting services to the upstream drilling and exploration community. IDS introduced 'DataNet' in 2001 and is the only web-based, fully integrated Drilling / Completions / Geological and Inventory reporting service. Currently, we have 70+ clients in 30+ countries with offices in Kuala Lumpur, Kuching, Aberdeen and Calgary. IDS focuses on 'knowledge management' rather than simple reporting.

Summary of DataNet Features

- Fully web-based – accessible 24/7 from anywhere
- The IDS DPR data acquisition is service ready now, CPR by Feb 07
- 90% of fields auto-populated from IDS system with average delivery time of 20 minutes a well
- Working closely with the Operators on a case-by-case basis customising service to reach 100% compliance / 5 minutes per well

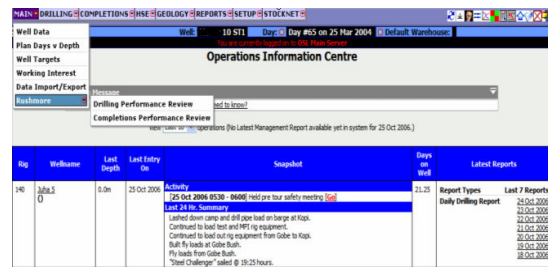
Rushmore and DataNet

The IDS DataNet Rushmore interface draws data from multiple wells and delivers that data in compatible format to a Rushmore Input Screen.

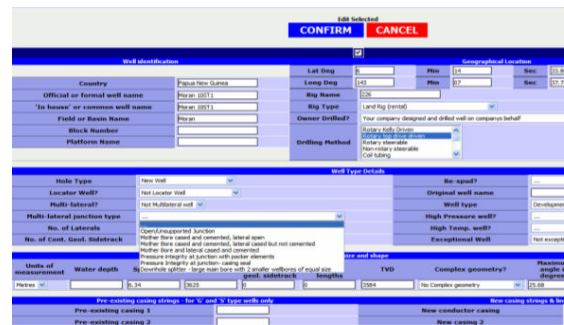
Any additional data required is entered using 'free-text' dropdown lists which are also converted by DataNet into compatible code and imported into Rushmore.

The Rushmore service is part of the DataNet reporting system and carries no extra charge.

Select review type



Data population



Standard DPR output

Country	Official well name	Common well name	Basin Name	Block Number	Platform Name	at Deg	Lat Min	Lat Sec	Long Min	Long Sec	E	W	Rig Name
AFRICA	TEST WELL #5				Natchanan-2	27	26	10.87	5	157	14	47.63	Ocean
AFRICA	TEST WELL #8					11	21	43.55	N	17	5	7.040	Ocean

For more information please contact support@idsdatanet.com or visit www.idsdatanet.com